

# Getac



Windows®. Life without Walls™.  
Getac recommends Windows 7.

## Uncompromised Performance to Boost Work Efficiency

*A Powerful Tool for Professionals*

Getac S400  
Semi-rugged Notebook



# S400

Semi-rugged  
Notebook



QuadraClear™  
Technology



Discrete  
Graphic Engine



Glove  
Multi-touch



GPS



Back Light  
keyboard



Serial Port

- Built-in GPS and Wireless Access
- Getac QuadraClear™ Sunlight Readable: Up to 700 Nits
- Resistive Type Multi-touch Display
- Full-sized Backlit Keyboard with Adjustable Backlight
- Powerful Quick Keys for Instant Access
- MIL-STD-810G and IP5X Certified
- Optional NVIDIA® GeForce® G310M 512MB VRAM
- Optional Low Temperature Module



Getac S400 is a splash, dust and drop-shock resistant notebook with MIL-STD-810G certification and IP5X rating. It comes with an optional low temperature module to allow operation in environment where the temperature is as low as -15°C. Designed to survive harsh conditions, S400 is built with KryptoShell™ chassis for comprehensive protection; its sealed I/O ports shield the connectors against external impact. Users can also appreciate its quick keys feature that allows switching between programs or operation modes with one easy keypress. The backlit keyboard with adjustable backlight provides improved visibility in low light environment, and the ergonomically designed full-sized keyboard contributes to efficient data input, resulting in enhanced work efficiency.

Powered with Intel® Core™ processor and Intel® vPro™ technology, S400 brings users speed and data security. Its remote management feature ensures maximum protection of critical information. The device also boasts a built-in webcam, a GPS receiver, Bluetooth, WLAN and WWAN connections with the option of an in-car dual pass-through antenna connector, to offer users seamless communication on the go.

## I/O Ports



### Back Side

- DC in Jack x 1
- USB 2.0 x 1
- Serial Port x 1
- LAN (RJ45) x 1
- Modem (RJ11) x 1
- External VGA x 1



### Left Side

- Audio Output x 1
- Microphone x 1
- USB 2.0 / eSATA Combo x 1
- Multi Memory Card Reader x 1
- USB 2.0 x 2
- IEEE 1394a x 1



### Right Side

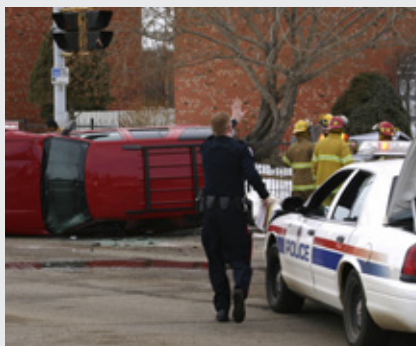
- Smart Card Reader x 1
- Battery Pack x 1
- PCMCIA x 1
- ExpressCard x 1
- Optical Drive x 1

## Industry Applications



### Field Service

S400 combines both sturdiness and mobility. Its comfortable handle allows users to bring the device with ease to service sites to carry out maintenance, repair, inspection, or exploration work. The resistive multi-touch display presents a convenient, agile and user-friendly operating interface with streamlined process. Via wireless connection users can link to control center to access or transmit critical data, achieving greater efficiency through reduced idle capacity in each stage of the process.



### Public Safety

S400 incorporates two special quick keys that allow the machine to enter "Blackout" or "Emergency" mode to assure safety of users under extraordinary conditions. In critical situations, pressing the "Blackout" key would instantaneously turn off all device lighting. The "Emergency" key is designed for users to page control center for support, enabling swift response to unforeseen situations to better protect human lives.



### Government

Also fulfilling every requirement for an indoor environment, Getac S400's Intel® Core™ processor and 14-inch screen guarantee both functionality and comfort necessary for office work. Understanding the importance of information security and confidentiality for government agencies, S400 features cutting-edge data protection technologies, such as Intel® vPro™ and TPM 1.2, as well as an identification system with smart card reader and fingerprint authentication to safeguard critical information.

## Optional Accessories



### Office Dock

W x D x H: 288 x 172.5 x 53.5mm  
(11.34" x 6.8" x 2.11")

- USB 2.0 x 3
- Audio Output x 1
- Microphone x 1
- Dc in Jack x 1
- LAN (RJ45) x 1
- PS/2 x 2
- USB / eSATA Combo x 1
- External VGA x 1
- DVI x 1
- Display Port x 1
- Printer Port x 1
- Serial Port x 2



Main battery  
(7800mAh)



Low Temperature  
Battery (7800mAh)



Battery Charger



Carrying Bag



AC Adapter  
(65W/90W\*,  
100-240VAC)



Vehicle Adapter  
(90W, 11-16VDC  
and 22-32VDC)



Stylus & Tether



Optical Drive  
Weight Saver

\* Discrete graphic controller requires 90W AC adapter.

# Specifications

<b>Operating System</b>	Genuine Windows® 7 Professional	<b>Communication Interface</b>	10/100/1000 base-T Ethernet Optional 56K ITU V.92 modem Intel® Centrino® Advanced-N 6200; 802.11 a/b/g/n Optional Bluetooth (v2.1+EDR class 2) Optional GPS Optional Gobi™2000 mobile broadband
<b>Mobile Computing Platform</b>	Intel® Core™ i5 Technology - Intel® Core i5-520M Processor 2.4GHz, Max. 2.93GHz with Intel® Turbo Boost Technology - 3MB L3 Intel® Smart Cache - Mobile Intel® QM57 Express chipset - Optional vPro™ Technology  Intel® Core™ i3 Technology - Intel® Core i3-350M Processor 2.26GHz - 3MB L3 Intel® Smart Cache - Mobile Intel® QM57 Express chipset	<b>Software</b>	Getac Utility Getac Smart Download Adobe® Reader® CompuTrace® Compatible BIOS
<b>VGA Controller</b>	Intel® Graphics Media Accelerator HD¹ Optional NVIDIA® GeForce® G310M 512MB discrete graphic controller	<b>Security Feature</b>	Optional Intel vPro™ Technology TPM 1.2 Fingerprint scanner Smart card reader Kensington lock
<b>Display</b>	14" TFT LCD WXGA (1366 x 768) Standard Anti-reflective / Anti-glare display Optional 700 nits QuadraClear™ sunlight readable display with multi-touch screen	<b>Power</b>	AC adapter (65W, 100-240VAC, 50 / 60Hz) or AC adapter (90W, 100-240VAC, 50 / 60Hz) <sup>ii</sup> Li-Ion smart battery (7800mAh) <sup>iii</sup>
<b>Storage &amp; Memory</b>	2GB DDR3 expandable to 8GB SATA HDD 320 GB Optional SATA SSD 80GB	<b>Dimension (W x D x H) &amp; Weight</b>	348 x 258 x 49.2 mm (13.7" x 10.15" x 1.93"), 2.9 kg (6.4 lbs) <sup>v</sup>
<b>Keyboard</b>	Membrane keyboard Optional LED backlit membrane keyboard	<b>Rugged Feature</b>	MIL-STD-810G and IP5X certified Keyboard splash resistant Sealed ports and connectors Shock-protected removable HDD Vibration & drop resistant
<b>Pointing Device</b>	Touchscreen - Optional pressure sensitive multi-touch screen Touchpad - Glide touchpad with scroll bar	<b>Environmental Specification</b>	Temperature: - Operating: 0°C to 45°C / 32°F to 113°F Optional low temperature: -15°C to 45°C / 5°F to 113°F - Storage: -40°C to 71°C / -40°F to 160°F Humidity: - 95% RH, non-condensing
<b>Expansion Slot</b>	PCMCIA Type II x 1 + ExpressCard/54 x 1 Multi Memory Card Reader x 1		
<b>Multimedia Bay</b>	DVD super multi drive Optional optical drive weight saver		
<b>I/O Interface</b>	Optional 1.3M pixels webcam x 1 Serial port (9-pin; D-sub) x 1 External VGA (15-pin; D-sub) x 1 Microphone (Mini-jack) x 1 Audio output (Mini-jack) x 1 DC in Jack x 1 USB 2.0 (4-pin) x 3 USB 2.0 / eSATA Combo x 1 Optional Modem (RJ11) x 1 LAN (RJ45) x 1 IEEE 1394a x 1 Docking connector (144-pin) x 1 Optional RF antenna pass-through for GPS and WWAN		

- i Share memory size may vary by different operating system and RAM size.
- ii Discrete graphic controller requires 90W AC adapter.
- iii Battery life testing conducted under BatteryMark 4.0.1. Battery performance will vary upon software applications, wireless settings, power management settings, LCD brightness, customized modules and environmental conditions. The battery has a limited number of charge cycles and may eventually need to be replaced by a Getac service provider. Battery life and charge cycles vary by use and settings.
- iv Weight varies from configurations and optional accessories.  
- Standard display: 6.4 lb - 7 lb (2.9 kg - 3.2 kg)  
- QuadraClear™ sunlight readable display with touchscreen: 7.4 lb - 8 lb (3.4 kg - 3.6 kg)
- v Tested by a national independent third party test lab following MIL-STD-810G.



Business Rugged   **Semi-rugged**   Rugged   Fully Rugged   Ultra Rugged

## Getac EUROPE

Germany Office -  
Getac Technology GmbH  
Kanzlerstrasse 4  
40472 Düsseldorf, Germany  
Tel: +49 211 984 8190

## Italy Office

Tel: +39 02 36539562

## UK Office - Getac (UK) Ltd.

Mitac house, Nedge Hill, Telford,  
Shropshire, TF3 3AH, U.K.  
Tel: +44 1952 207 231

## Getac NORTH AMERICA

USA Office - Getac Inc.  
43 Tesla, Irvine, CA 92618, USA  
Toll Free: +1 886 GO GETAC  
(1 886 464 3822)

## Getac ASIA

China Office -  
Getac Mobile Ltd.  
- Kunshan Office:  
Export Processing Zone, 269,  
No.2 Dadao, Changjiang South Rd.,  
Kunshan City, Jiangsu, China  
Tel: +86 512 57382090  
+86 512 57367777 # 5124

- Shanghai Office:  
Room 122, Floor 2,  
No.211 Jiangchang 3rd Rd.,  
Zhabei District, Shanghai, China  
Tel: +86 21 61431188 # 1032  
Fax: +86 21 61401023

- Beijing Office:  
Room 501, Haowei Building,  
No.25 Beitai Pingzhuang Rd.,  
Haidian District, Beijing, China  
Tel: +86 10 62381104  
+86 10 62381108 # 2040

Japan Office -  
MiTAC Japan Corporation  
Yasuda 8th Building 6F,  
Kaigan 3-chome 3-8, Minato-ku,  
Tokyo, 108-0022, Japan  
Tel: +81 3 3769 8311 # 6411

Taiwan Office -  
Getac Technology Corporation  
5F, Building A, No. 209,  
Section 1, Nangang Rd.,  
Nangang Dist., Taipei City,  
11568, Taiwan, R.O.C.  
Tel: +886 2 2785 7888

## SALES CONTACT

North America  
ruggedsales@getac.com

South America  
sales-getac-SAmerica@getac.com

EMEA  
sales-getac-EMEA@getac.com  
- Germany:  
sales-getac-DACH@getac.com  
- Italy:  
sales-getac-Italy@getac.com  
- UK:  
sales-getac-UK@getac.com

Asia Pacific  
sales-getac-APAC@getac.com  
- China:  
sales-getac-China@getac.com  
- Japan:  
sales-getac-Japan@getac.com

## MARKETING CONTACT

Global  
Globalmarketing@getac.com

North America  
NorthAmericamarketing@getac.com

South America  
SouthAmericamarketing@getac.com

EMEA  
EMEAmarketing@getac.com

Asia Pacific  
APACmarketing@getac.com

www.getac.com

Copyright © 2010 Getac Technology Corporation and/or any of its affiliates. All Rights Reserved.  
V01M10Y10